

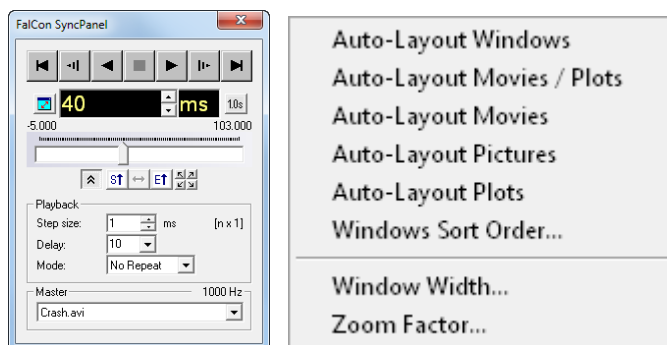
## FalCon eXtra: Hotkeys & Shortcuts FAQ

### Viewer of multimedia data

- **Ctrl+C** = copy to clipboard
- **Ctrl key pressed** while closing a window closes all windows of the same type, e.g. all AVIs

### SyncPanel

- **L** = Auto-layout movies + pictures + plots
- **Shift + L** = Auto-layout movies in upper half, plots in lower half
- **Space bar** = Play+Pause or continue (= "start+stop")



### Movies / AVIs and Pictures

- Use the **+/- keys** for window size (zoom)
- Press **Home** for reset to 100% original size
- Press **End** to adapt to FalCon eXtra desktop
- Press **mouse button 1** and drag for zoom

### Pictures

- Press the **Ctrl key** and the **arrow keys** to adapt the cursor size during(!) the white balance. The colors will be averaged within an area of 1x1 until 9x9 pixel (see also text in status bar).
- **Ctrl key pressed** while closing the optimization dialog results in closing of these dialogs in all picture windows.

## FalCon Measurement Plots 2D

Keys	Action
Ctrl+Mouse	Show and move value cursor by mouse movements
Ctrl+C	Copy into clipboard
Ctrl+I	Open the <b>Info</b> dialog
Ctrl+A / Alt+Return	Open the Plot Settings dialog / tab <b>Attributes</b>
Ctrl+S	Open the Plot Settings dialog / tab <b>Scaling</b>
<b>Ctrl+G</b>	Open the Plot Settings dialog / tab <b>Graphs</b>
Ctrl+E	Open the Plot Settings dialog / tab Insert ( <i>Enter</i> )
Ctrl+L	Active graph on <b>left</b> axis
Ctrl+R	Active graph on <b>right</b> axis
Ctrl+T	Legends <b>top</b>
Ctrl+B	Legends <b>bottom</b>
Ctrl+X / Ctrl+Close	Close all plot windows
Ctrl+change size	Change window size of all plot windows
Insert	Add graph
Delete	Remove graph
F5	Refresh window
End	Automatic graph colors
Home + Ctrl	Automatic scaling of all axes Apply the (possibly stored) scaling from the registry
<i>numerical 0</i>	Goto T0
+ / -	Window size $\pm 5\%$
Ctrl+"+/-"	Enlarge scaling = zoom out / Reduce scaling = zoom in in all directions by 25%
Arrow keys	Move scaling: right, left, top, bottom in each case by 50%
Ctrl+Z	Restore last scaling
Ctrl+"Save"	Function „Save As“ (via „Save“ symbol in plot window)
Ctrl pressed	Apply channel specific changes in Plot Settings dialog / tab Graphs for all graphs (during selection or after completion of text entry)
Mouse button 2 pressed & drag	Copy/Move graph to new window or to existing window

## FalCon MovXact

During all interactive inputs not only mouse interactions but also input via keyboard is available:

- OK („pop-up menu“) = Enter key
- Cancel = Esc key
- Mouse movements = Arrow left/right or up/down = translation +- 1 pixel or 1/zoom-factor in zoom window
- „Pop-up menu“ = Ctrl key simulates pressing mouse button 2
  - Adjust the diameter interval of MXT, DOT or QUAD markers
    - = Ctrl (pressed) = auto-centering of zoom window +
    - Ctrl + Arrow up/down = (inner) diameter min. +- 1,
    - Ctrl + Arrow left/right = (outer) diameter max. +- 1
  - Adjust the rectangle size/diameter of COR markers
    - = Ctrl (pressed) +
    - Ctrl + Arrow up/down = height +- 2,
    - Ctrl + Arrow left/right = width +- 2
- Adjust stencils
  - = Ctrl + Arrow up/down = zoom +- 0.5 %,
  - Ctrl + Arrow left/right = rotation +- 0.5 deg

### Keyboard input:

Conclude a keyboard input via leaving the input field or via Tab or Enter key = apply an edited parameter and refresh dialog

### Analysis document window:

Select column title = Sort

press Ctrl key additionally = Delete the values of the column, e.g. all markers, all traj. values

### Interactive display in analysis image:

Ctrl key and mouse movement = Show marker closest to the cursor

Shift key and mouse movement = Show ISO base code

Ctrl or Shift key + „A“ = Show „a“ll marker names or ISO base codes in image

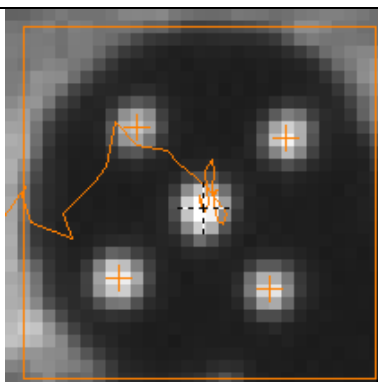
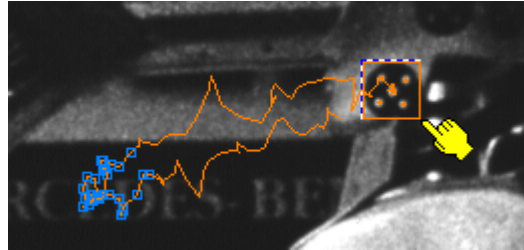
### MS Windows:

Try typical Windows interactions: multi-selection of tree elements via pressing

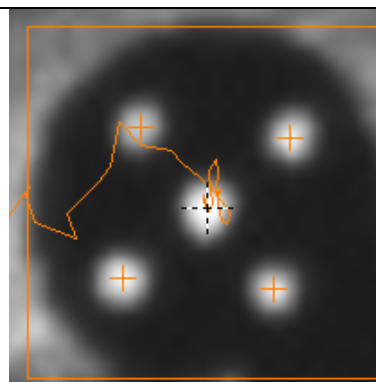
Shift or Ctrl key, list scroll via arrow keys, drag-and-drop to show diagrams etc.:

Ctrl- + "S" = Save document

## FalCon MovXact Zoom Window

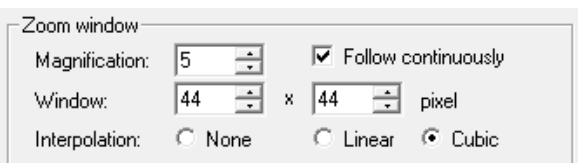


Zoom 7x - no interpolation



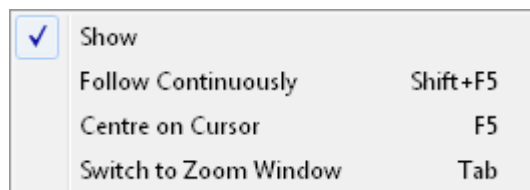
Zoom 7x – cubic interpolation

### Settings



- Position  
**press mouse button 1 in analysis image and drag**
- Image window  
**press mouse button 2 and drag**
- Magnification  
**Shift + Page up/down or +/-**
- Interpolation mode  
 hint: cubic

### Interactive Inputs via pop-up menu or keyboard



- Show zoom window
- Follow continuously = **Shift + F5**
- Centre on cursor = **F5**
- Switch to zoom window/ to analysis image = **Tab**